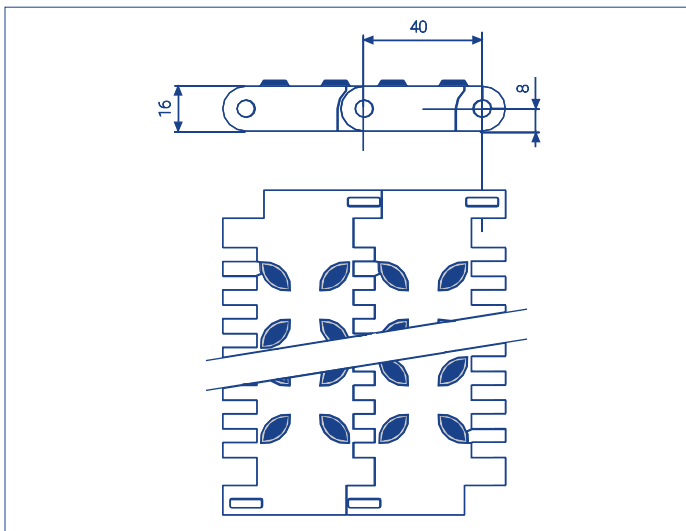




## Series **E40** Non Slip



Is the most resistant of all our belts, thanks to its specific design and high strength.

Its 40 mm pitch minimizes the polyhedron effect typical of big-pitch belts and makes easier the transference of product.

Its strong structure, together with the central traction system, enables working with very heavy loads in very extreme conditions.

	<b>Belt pitch</b>	40 mm
	<b>Belt width</b>	Multiples of 10 mm
	<b>Rod diameter</b>	6 mm
	<b>Drive system</b>	Central
	<b>Ø min direct rotation roller</b>	55 mm
	<b>Ø min reverse rotation roller</b>	150 mm



Belt surface	Belt material	Rod material	Belt resistance (kg/m)	Belt weight (kg/m <sup>2</sup> )	Temperature limit (C°)	Standard Colours <sup>1</sup>	Open Area + opening dimensions	Belt thickness	Retention system
Non Slip	PPE - Polypropylene Electrically Conductive	PP-Polypropylene	3600	11,97	+1 to +104	0	0%	16 mm	Cap
	BCE - Acetal Electrically Conductive		Consult	Consult	Consult	Consult			

<sup>1</sup>W = White G = Grey N = Natural B = Blue O = Black

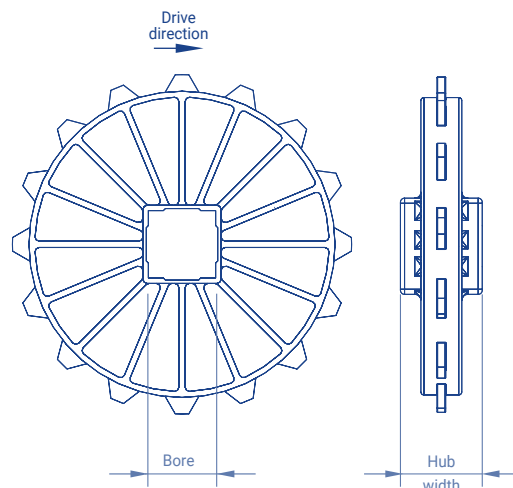
## Accessories **E40** Sprockets

We also have sprockets to be used with motor drum in applications needing a special cleaning or in conveyors in which it is not possible to place the motor in the outside due to problems of space or safety.

N° teeth Z	Ø Pitch	Bore for square shaft		Hub width
		mm	inch	
8	104,5	40	1,5	40
10	129,4	40 - 60	1,5	40
13	167,1	40 - 60	1,5	40
13D <sup>1</sup>	167,1	40 - 60	1,5 - 2,5	40
16	205	40 - 60	1,5	40
20	255,7	40 - 60 - 90	1,5	40

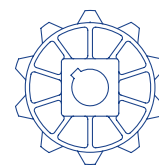
<sup>1</sup>Double-toothed sprockets: it is manufactured in polypropylene and acetal (consult for other materials)

\*Consult the technical department for the availability of split sprocket or machined sprocket with different numbers of teeth.

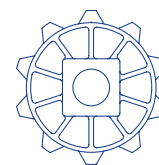


It is manufactured in polypropylene, polyacetal and stainless steel

\*check availability in other materials



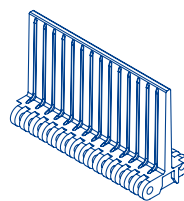
WITH KEYWAY



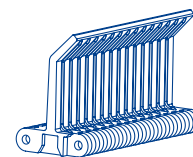
WITHOUT KEYWAY

## Accessories **E40** Flights, Side guards and Rollers

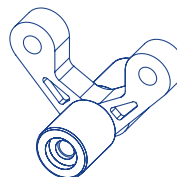
Accessories	Height (h)	Materials
Straight flight (Streamline + no cling)	25	Polypropylene Polyethylene Acetal
	50	
	75	
	100	
Bent flight	45	Polypropylene Polyethylene Acetal
	70	
	90	
Side guards	50	Polypropylene Polyethylene Acetal
	75	
	100	
Hold-down rollers	-	Acetal + Polypropylene Acetal + PBT



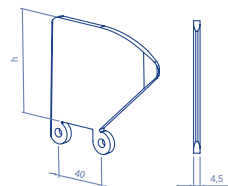
STRAIGHT FLIGHT  
(STREAMLINE + NO CLING)



BENT FLIGHT



HOLD-DOWN ROLLERS



SIDE GUARDS